



PUBLIC SPACES

BZA SUBMISSION

AUGUST 26, 2019

"THE PROPOSED PROJECT WILL UNIFY THE EXISTING NATIONAL GEOGRAPHIC CAMPUS WITH A NEW PAVILION, PLAZA, RENOVATED GROUND LEVEL, AND COHESIVE STREETScape. THE PAVILION AND PLAZA WILL BE THE NEW MAIN ENTRY AND EVENTS SPACE OF THE SITE AND WILL ESTABLISH NATIONAL GEOGRAPHIC'S IDENTITY AT ITS HEADQUARTERS LOCATION. A NEW OPEN SPACE WILL BE CREATED THAT CAN ACCOMMODATE OUTDOOR PRESENTATIONS, LECTURES, EXHIBITS AND OTHER OUTDOOR EVENTS FOR STUDENT AND TEACHER GROUPS, GATHERINGS OF EXPLORERS, MEMBERS AND OTHER VISITORS, ALL IN SUPPORT OF NATIONAL GEOGRAPHIC SOCIETY'S MISSION. THE PLAZA WILL SERVE AS AN URBAN AMENITY -- A WELCOMING PLACE TO ENCOURAGE FURTHER EXPLORATION OF THE MUSEUM AND ITS MANY PROGRAMS IN THE BUILDINGS BEYOND."

BZA SUBMISSION
SITE

RHODE ISLAND AVE.

MASSACHUSETTS AVE.

M STREET NW

17TH STREET NW

16TH STREET NW

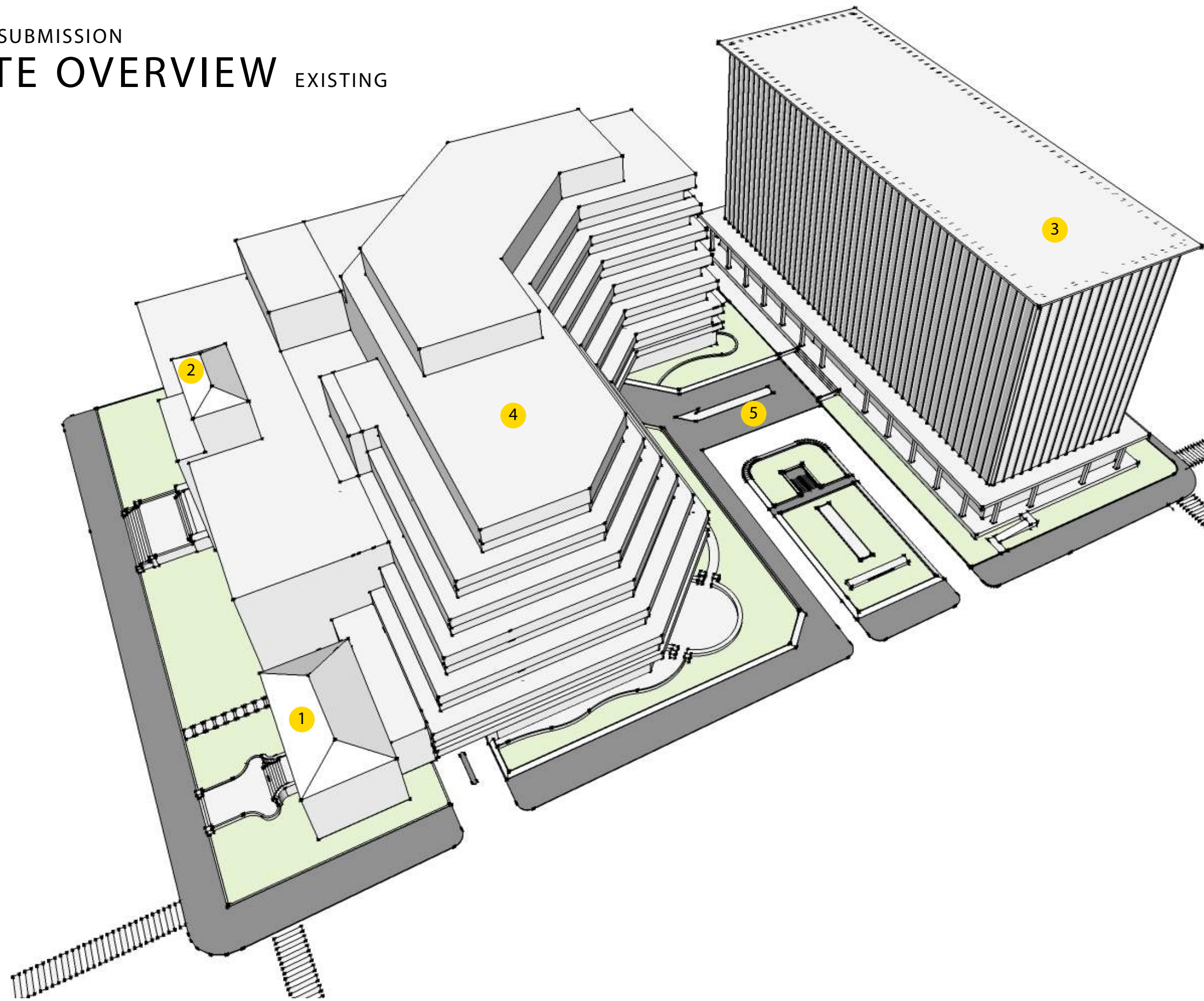
15TH STREET NW

CONNECTICUT AVE.

L STREET NW

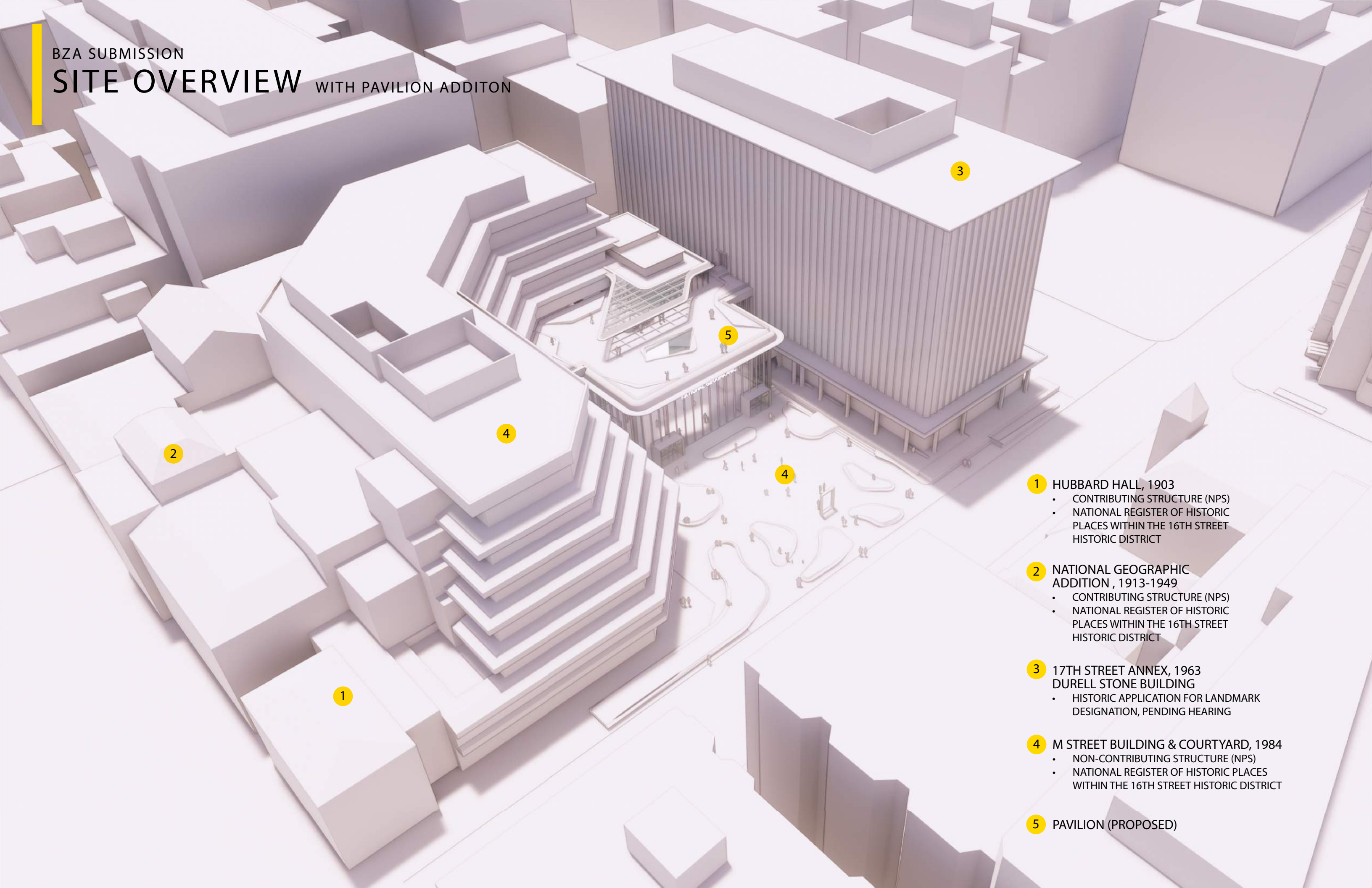


SITE OVERVIEW EXISTING



- 1** HUBBARD HALL, 1903
 - CONTRIBUTING STRUCTURE (NPS)
 - NATIONAL REGISTER OF HISTORIC PLACES WITHIN THE 16TH STREET HISTORIC DISTRICT
- 2** NATIONAL GEOGRAPHIC ADDITION, 1913-1949
 - CONTRIBUTING STRUCTURE (NPS)
 - NATIONAL REGISTER OF HISTORIC PLACES WITHIN THE 16TH STREET HISTORIC DISTRICT
- 3** 17TH STREET ANNEX, 1963
DURELL STONE BUILDING
 - HISTORIC APPLICATION FOR LANDMARK DESIGNATION, PENDING HEARING
- 4** M STREET BUILDING, 1984
 - NON-CONTRIBUTING STRUCTURE (NPS)
 - NATIONAL REGISTER OF HISTORIC PLACES WITHIN THE 16TH STREET HISTORIC DISTRICT
- 5** EXISTING DRIVEWAY

SITE OVERVIEW WITH PAVILION ADDITON



- 1** HUBBARD HALL, 1903
 - CONTRIBUTING STRUCTURE (NPS)
 - NATIONAL REGISTER OF HISTORIC PLACES WITHIN THE 16TH STREET HISTORIC DISTRICT

- 2** NATIONAL GEOGRAPHIC ADDITION, 1913-1949
 - CONTRIBUTING STRUCTURE (NPS)
 - NATIONAL REGISTER OF HISTORIC PLACES WITHIN THE 16TH STREET HISTORIC DISTRICT

- 3** 17TH STREET ANNEX, 1963
DURELL STONE BUILDING
 - HISTORIC APPLICATION FOR LANDMARK DESIGNATION, PENDING HEARING

- 4** M STREET BUILDING & COURTYARD, 1984
 - NON-CONTRIBUTING STRUCTURE (NPS)
 - NATIONAL REGISTER OF HISTORIC PLACES WITHIN THE 16TH STREET HISTORIC DISTRICT

- 5** PAVILION (PROPOSED)

BZA SUBMISSION
ZONING

1145 17TH ST NW
LOT 883, SQ 183
34,890 SF TAX RECORD LOT
D-6

1600 M ST NW
LOT 884, SQ 183
89,467 SF TAX RECORD LOT
D-6 / D-2 (SPLIT-ZONED)

M STREET NW

GENERAL ZONING SUMMARY:

SQUARE 183 / LOTS 883 & 884
ZONED D-2 / D-6 (SPLIT-ZONED)

F.A.R. = D-2 LOT (3.5 FAR) = 121,646 GFA
D-6 LOT (8.5 FAR) = 761,609 GFA
ALLOWABLE FAR = 883,255 GFA
(7.10 FAR)

587,607 GFA EXISTING (BUILT)
23,550 GFA PAVILION (NEW)
611,157 GFA (TOTAL) (4.91 FAR)

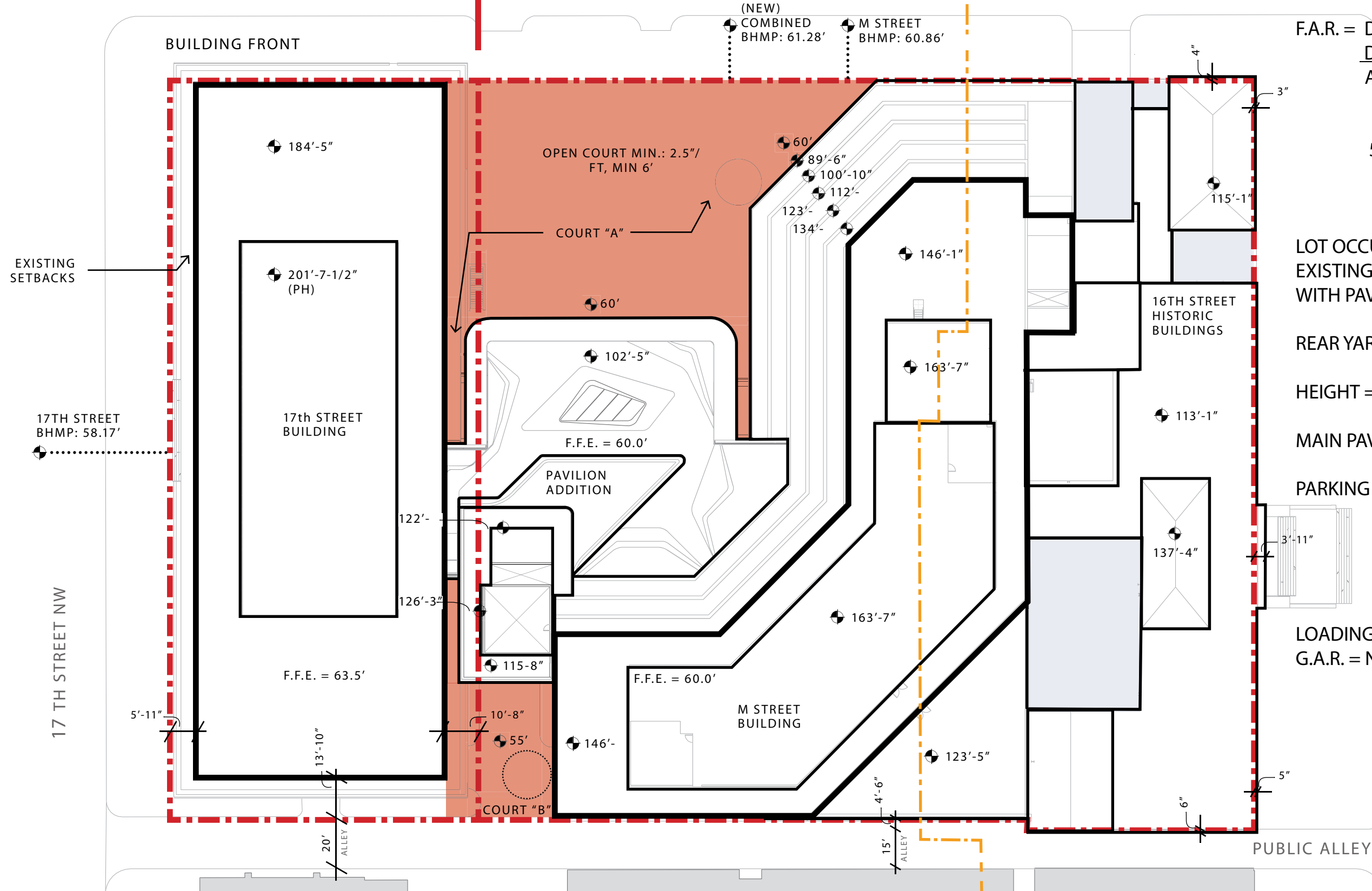
LOT OCCUPANCY = 100% ALLOWABLE
EXISTING CAMPUS = 77% LOT OCCUP.
WITH PAVILION = 86% LOT OCCUP.

REAR YARD = NOT REQUIRED

HEIGHT = D-2 = 90'-0" PLUS 20'-0" PH
D-6 = 130'-0" PLUS 20'-0" PH
MAIN PAVILION HT = 41'-2" (65'-0" AT PH)

PARKING = NONE REQUIRED (PAVILION)
(EXISTING PARKING RETAINED)

LOADING = EXISTING LOADING
G.A.R. = NOT REQUIRED



BZA SUBMISSION

PROPOSED PAVILION & PLAZA



IMAGE ON MEDIA WALL:
DR. MAURICE G. HORNOCKER

EXISTING VIEW AT M STREET



BZA SUBMISSION

PROPOSED PAVILION & PLAZA - M STREET



IMAGE ON MEDIA WALL:
CHARLIE HAMILTON
JAMES/ NATIONAL GEOGRAPHIC CREATIVE

BZA SUBMISSION

PROPOSED PAVILION & PLAZA



IMAGE ON MEDIA WALL:
CHARLIE HAMILTON
JAMES/ NATIONAL GEOGRAPHIC CREATIVE